

Pre-Adding TrueType Fonts to WES7 Image

By Sean D. Liming

Owner

SJJ Embedded Micro Solutions

May 2011

As you develop custom application, you may develop or use special TrueType Fonts that are not standard Windows fonts. Normally, all you have to do is drop the font into the \Windows\Fonts folder and it will install the font directly. For WES7, there are a couple of setup steps required if you want to pre-add the font in a WES 7 answer file and have them installed into your image.

For a fun example, we'll use the Aurabesh font from Star Wars™. English characters are replaced 1:1 with a unique set of characters. More information can be found here: <http://starwars.wikia.com/wiki/Aurebesh>. You can see the Aurabesh font characters used in the movies, video games, and on www.starwars.com:

- Corusant (𐄎𐄇𐄏𐄑𐄒𐄓𐄔𐄕𐄖)
- Naboo (𐄗𐄘𐄙𐄚𐄛)
- Tatooine (𐄜𐄝𐄞𐄟𐄠𐄡𐄢)
- Mustafar (𐄣𐄤𐄥𐄦𐄧𐄨𐄩)

For the few non-fans:

- Hello World (𐄎𐄇𐄏𐄑𐄒 𐄓𐄔𐄕𐄖)

You can download the font from various websites. Here are a few sites:

- <http://www.fontfiles.com/Fonts/Detailed/56.html>
- <http://www.fonttrader.com/detailed~name~Aurabesh~font~3638.htm>

There are two steps to add a new font to the answer file:

1. Setup the distribution share: \$OEM\$ Folders\Star Wars Aurebesh\SOEMS\\$\$\Fonts. In my test case, I download two different versions of the font:

- newaure.ttf
- AURABESH.TTF

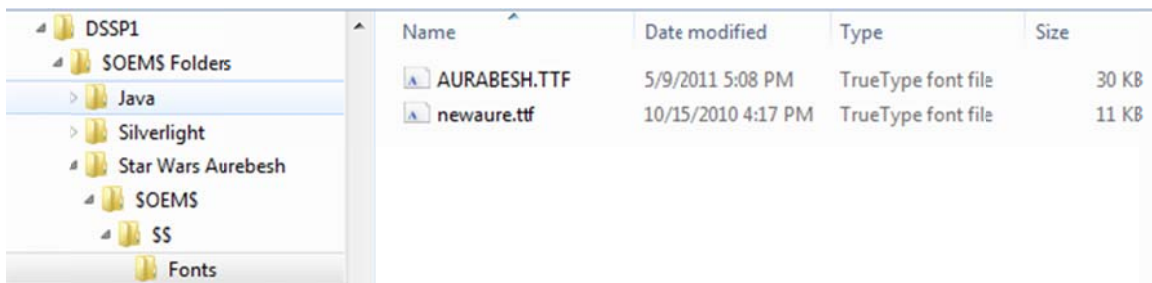


Figure 1 - Setting up the distribution share

Placing the fonts in this folders means they will be installed in the \Windows\fonts directory during OS installation. They will not be accessible until they are registered in the registry, which brings us to step 2:

2. A registry key is needed to link in the font. You can add the registry key using a Synchronous command and reg.exe command to register the font. I typically set the run the command under **Pass 4 Specialize** to register the font. Here are the two synchronous commands to enter for each font:

```
reg add "HKLM\SOFTWARE\Microsoft\Windows NT\CurrentVersion\Fonts" /v "NewAurebesh (TrueType)" /t REG_SZ /d newaure.ttf /f
```

```
reg add "HKLM\SOFTWARE\Microsoft\Windows NT\CurrentVersion\Fonts" /v "Aurebesh (TrueType)" /t REG_SZ /d AURABESH.ttf /f
```



Figure 2 - Example of adding one Synchronous Command

Once the image is installed, you can go to the fonts control panel applet, and view that the fonts installed correctly.

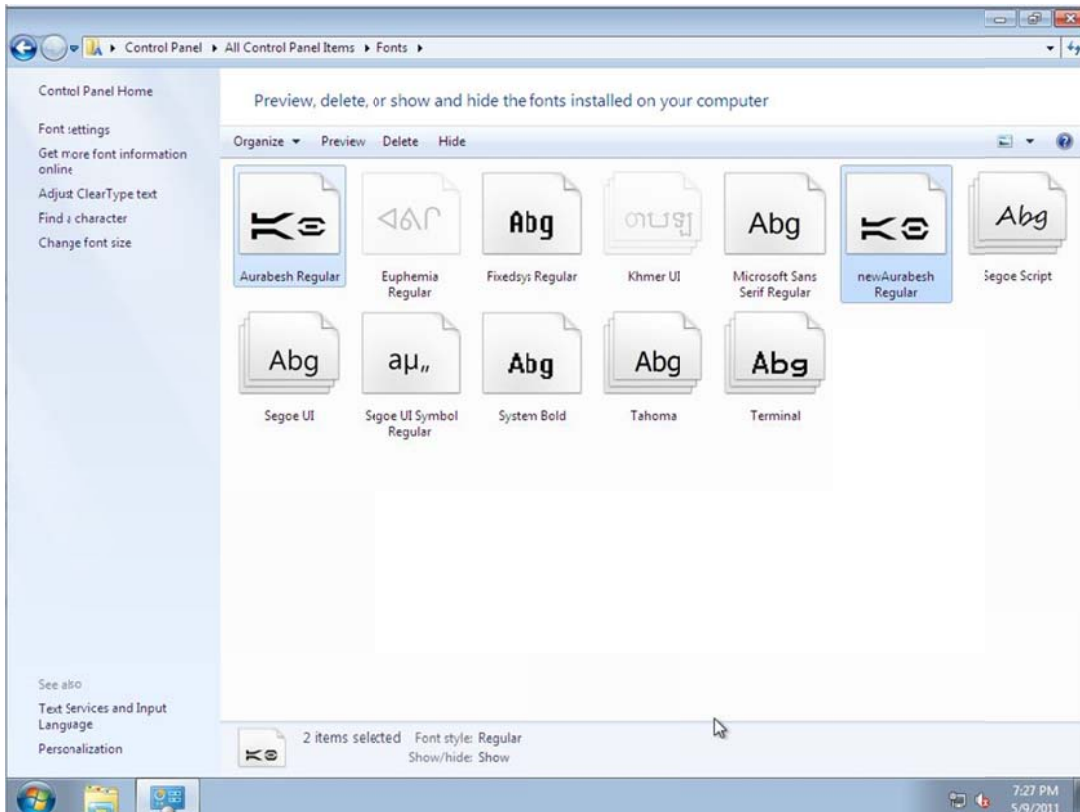


Figure 3 - Fonts successfully added to the image

If you really want to get crazy with the font, you can change all the display properties to use your new font.

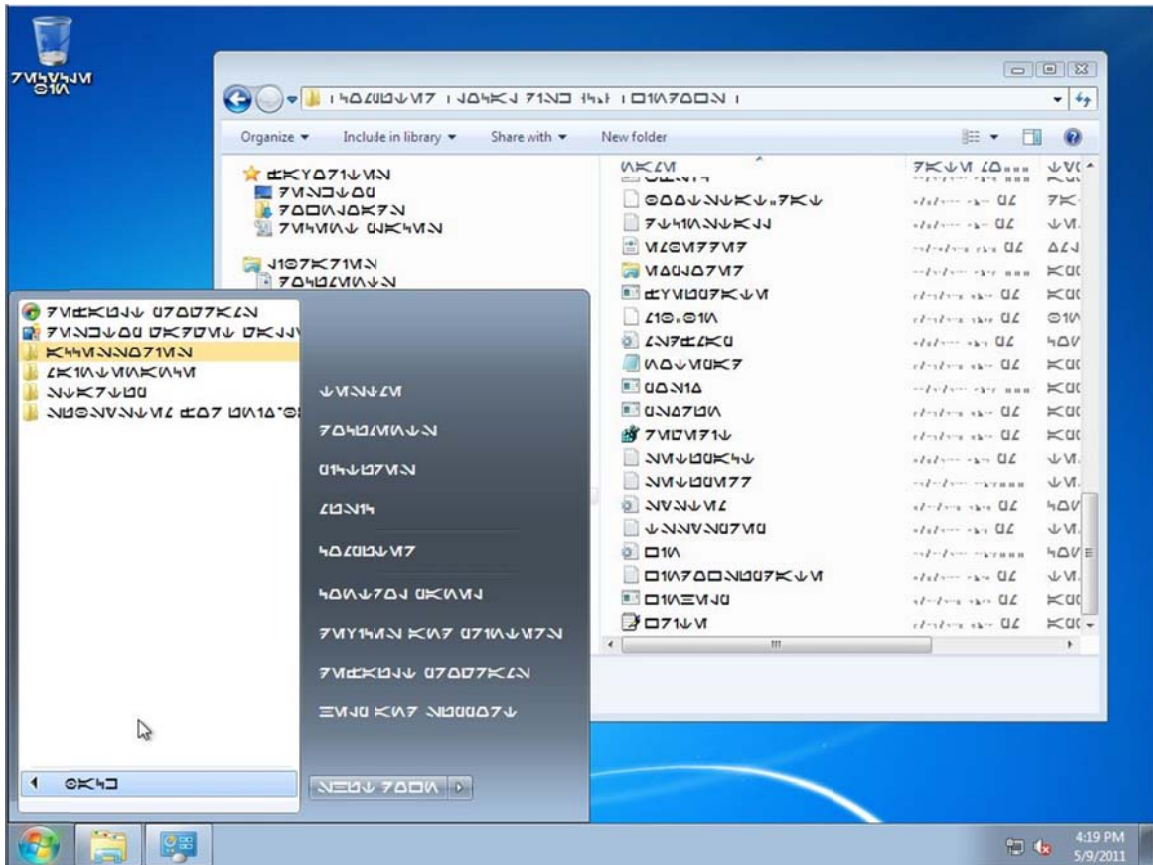


Figure 4 - Display fonts set to the new font.

Windows is a registered trademark of Microsoft Corporation.