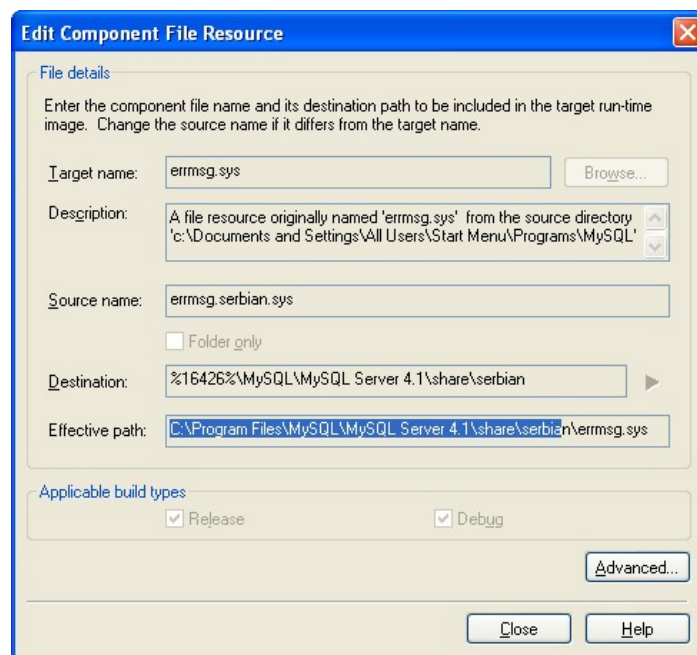


## MySQL 4.1 Example SLD Overview

The MySQL SLD is based on version 4.1 from [www.mysql.com](http://www.mysql.com) website. The ZIP package only contains the SLD. The actual MySQL binary files must be downloaded, installed in a system, and copied over to a flat release directory that the MySQL Repository is pointing too.

The MySQL component is a limited tested example using Explorer Shell as the shell in the test configuration. MySQL can be configured in a number of different ways. The component allows the three shortcut links to run: MySQL Command Line Client, MySQL Manual, and MySQL Server Instance Config Wizard. Since there are different configurations, one idea is to setup the server and create a database which could then be repackaged with the component.

The SLD was created with the help of ComponentHelper. When the files are copied to the flat repository directory, you will need to change the name for the different language files. Each set of language files use the same two names: `errmsg.sys` and `errmsg.txt`. The file resources for each language file take this same name file issue into account. In order to have the correct language files built into their appropriate directory, different file source names are used in each of the language file resources. For example, the two Serbian files should be renamed to `errmsg.serbian.sys` and `errmsg.serbian.txt`.



**Fig 1 Source Name Change to Support Multiple Languages**

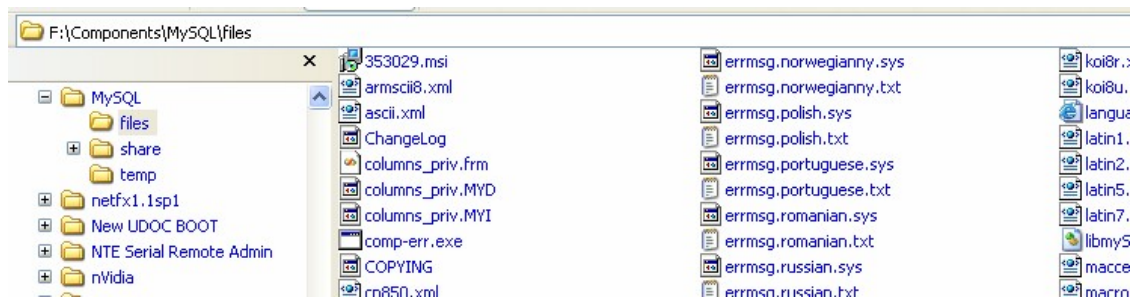
When Target Designer builds the image the files will be renamed back to the original names and place in the `C:\Program Files\MySQL\MySQL Server 4.1\share\serbia` directory. By changing the file names, all the languages can be supported. Please check the file resources in the component for a list of required files and the different language file names.

Windows is a registered trademark of Microsoft Corporation

Copyright © 2005 SJJ Embedded Micro Solutions, LLC., All Rights Reserved.  
[www.sjmicro.com](http://www.sjmicro.com)  
07/11/05

**Instructions:**

1. **Download** the MySQL v4.1 installation file from [www.mysql.com](http://www.mysql.com).
2. **Install** MySQL on an XP system.
3. **Download** the MySQL.ZIP file containing the SLD.
4. **Extract** the contents of ZIP file to your hard drive.
5. Create a new directory in the same directory as the SLD called **Files**. The Repository path is relative to the SLD. The Repository has been setup so the files are one directory level below the SLD.
6. **Copy** all the files in the different MySQL subdirectories to the newly created **Files** directory. Be sure to change the language files: errmsg.sys and errmsg.txt. The files must be flat in the Files directory; **no subdirectories are allowed**. The picture below shows what file structure should look like.

**Fig 2 Files placed in flat directory**

7. **Import** the SLD into the XPe data base using Component Database Manager.

For any questions, please contact us at [www.sjmicro.com](http://www.sjmicro.com) / [support@sjmicro.com](mailto:support@sjmicro.com).